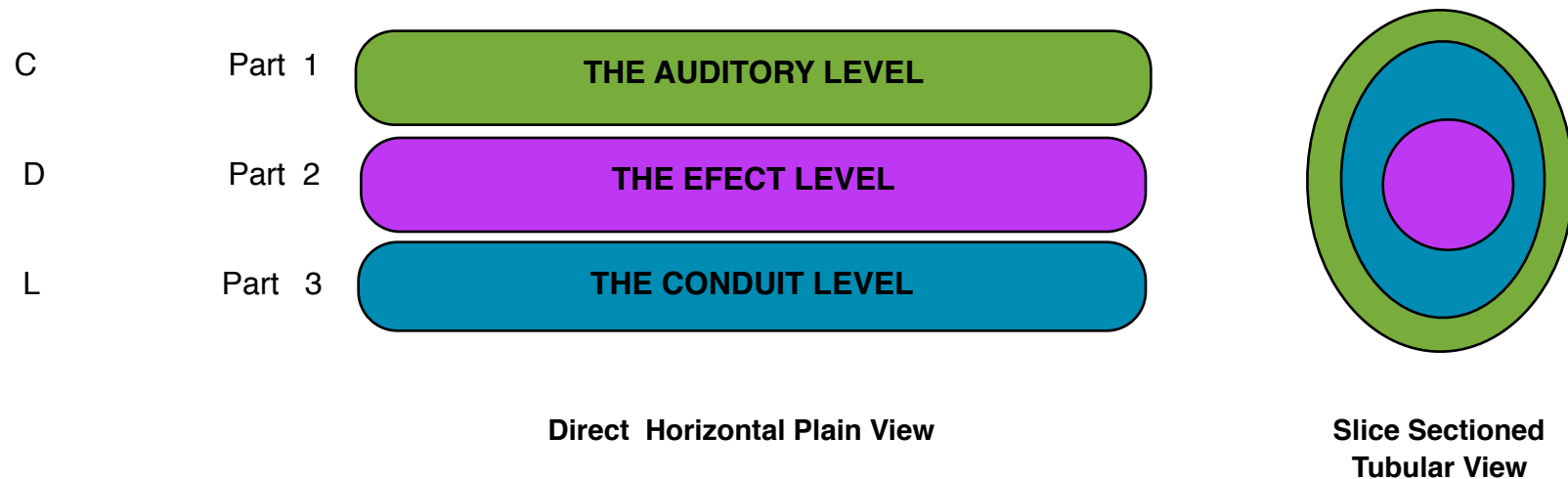


HOW IT WORKS & WHY IT IS SUPERIOR TO ANY OTHER AUDITORY SLEEP AID

What makes Secret Excursions' Orpheus Tones different and far superior from all other regular audio relax aids is immense. Other than the fact that it really works as advertised; the secret lies with its tri-layered design. Each distinct component part delivers an essential key element.

Secret Excursions' Wave Delivery System's three distinct functional parts are called CDLs (*Clustered Delivery Layers*).

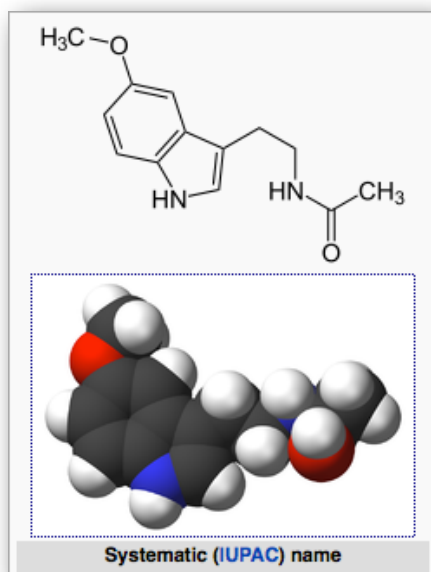


Each *CDL* has its own specialized function and carries a set or several sets of uniquely blend frequencies, sound waves and/or tone compressions; each with its own unique function.

THE CDL's AUDITORY LEVEL: This is the level which holds the wave's audible content. This content consists of a complex montage of continuous sequences derived from 32Bit Digitally Recorded All Natural Acoustic Sound Waves. (32Bit is twice the quality possible from today's CD Recordings). Although these sounds, which may range anywhere from the soft and gentle lapping of ocean waves, a distant thunder over the horizon or the chirping of new born Nightingales may sound soothing their function is not as a relaxant as would be its purpose with most competing auditory relax aids. Its purpose is two fold. The first is to distract and occupy the surface regions of the listener's superficial conscience, similar to how chants operate in many forms of meditation. Its second function sensitizes the listener's auditory regions while supplying a rich pallet for the listener's inner visual cortex.

HOW IT WORKS & WHY IT IS SUPERIOR TO ANY OTHER AUDITORY SLEEP AID

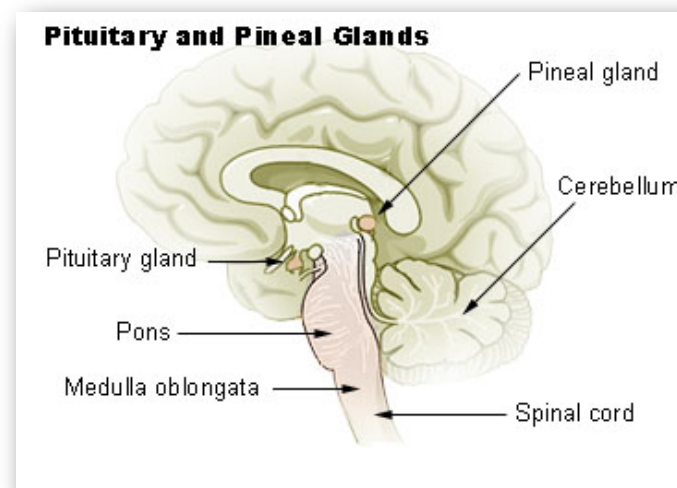
THE CDL's EFFECT LEVEL: As its name implies in more ways than one, this critically important region is where the Pre-Harmonic Auditory Synthesized Sounds are first introduced to the second montage's pre-dithered mix. These effects are the man-made synthesis components; exactly crafted individualized tones created to correspond to the precise *resonate calibration* of each "Original" *Solfeggio Frequency*. When properly calibrated and sonically mixed to a Pre-Pythagorean Chromatic scale and precisely tempered to a ratio in full accord with the Fibonacci Sequence as measured for accuracy



in compliance with the principles of Rodin's Vortex Based Mathematics, they produce or modulate into existence what USAudio has coined "The Orpheus Tone." The Orpheus Tone is the result of a unique

modulating oscillation accruing harmoniously between a compressed tri-toned set of precisely filtered alternating frequencies. Most likely effected by The Orpheus Tone is the Pineal Gland. Functions of the Pineal Gland In Brief: The Pineal Gland's ability to produce the body's naturally powerful sleep inducing and dream intensifying chemical "*melatonin*" (which also trigger the release of other powerful relaxation inducing enzymes), acts somewhat like a cascade of Natural Body Power Switches turning off the mechanisms that keep us awake. **The frequencies and tones within The EFFECT LEVEL are Non-auditory.** They can be viewed with modified *assolistopic* devices but not heard by human ears. **The pineal gland or epiphysis synthesizes and secretes melatonin**, is a structurally simple hormone that communicates information about environmental lighting to various parts of the body. The light-transducing ability of the pineal gland has led some to call the pineal the "**third eye.**" Others, expert cosmologists consider the

Pineal Gland to be the seat of the soul. This separate area (not part of the brain but perhaps of the *brane*) also considered by a great many highly respected physicists to be the conduit between our spirit, conscious (*relationship between the mind and the world with which it interacts*) and our physical bodies. It's sufficient to say the Pineal Gland is simply much too fascinating to give just explanation to in this short piece. **It would however be quite correct in stating that even with the vast knowledge of today's advanced medical sciences, this tiniest of organs remains the most mysterious of all.** To summarize, **THE CDL's EFFECT LEVEL** puts you to sleep.



HOW IT WORKS & WHY IT IS SUPERIOR TO ANY OTHER AUDITORY SLEEP AID

THE CDL's CONDUIT LEVEL: This (from a sound technician audio aficionado's perspective) is perhaps because of its physical properties, the most interesting of all three CDLs. It is the "Conduit and Shield" protecting the finely balanced tones and frequencies within the **The EFFECT LEVEL** from being effected by any possible interfering resonant harmonics of **THE CDL's AUDITORY LEVEL**. And for similar reasons (far too complicated to detail here) it also acts as a wave support vehicle on and around which **THE CDL's AUDITORY LEVEL** is able to travel more freely. The percussive sub-harmonics utilized with this layer serve to further sonically compress the inner **EFFECT LEVEL** while at the same time pull **THE CDL's CONDUIT LEVEL** frequencies along its percussive wake, as would a wave surfing upon and simultaneously within the curl of another more physical transportive wave. The sustaining **CDL CONDUIT LEVEL** keeps you resting naturally.

